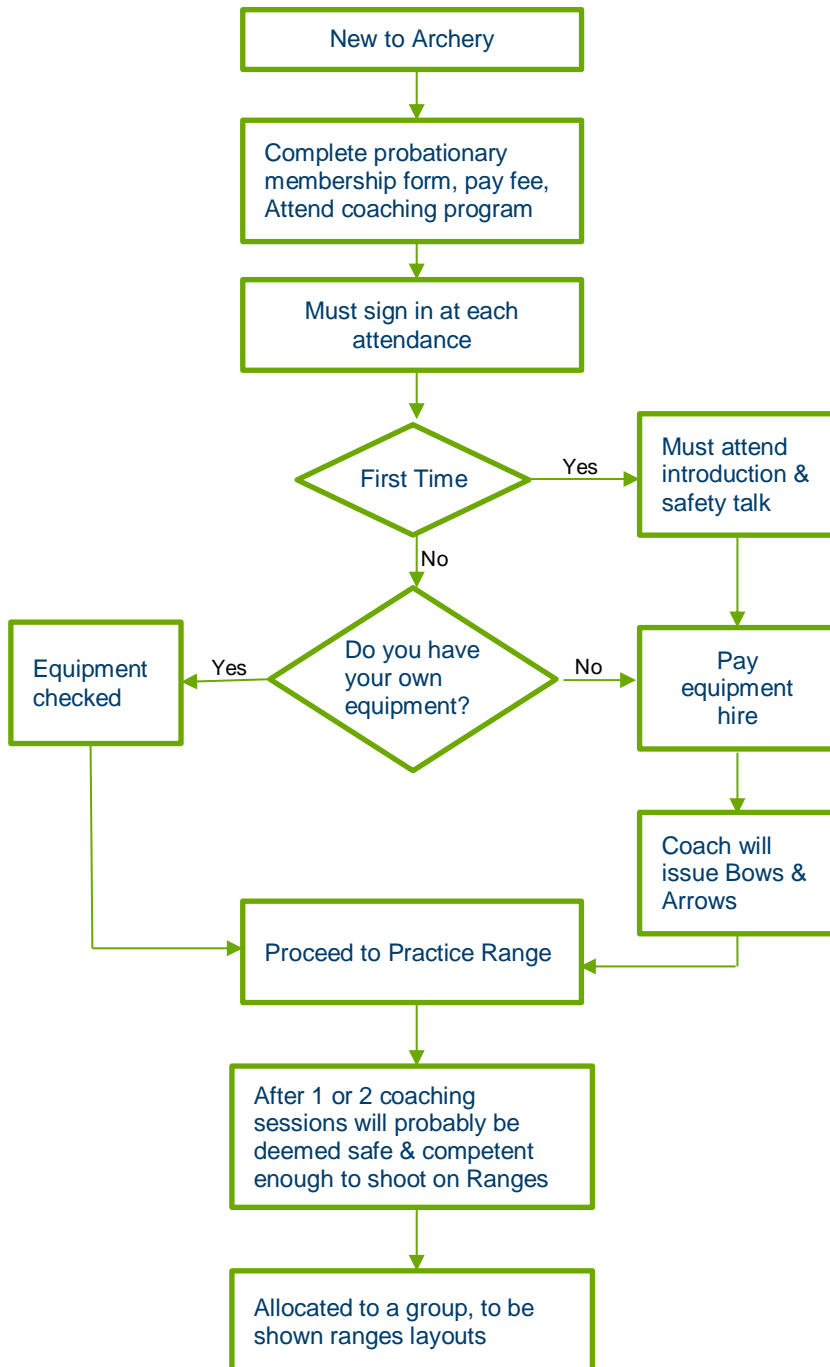


Lakeside Bowmen Inc. – How to Join New Member

Webpage: www.lakesidebowmen.com.au

Facebook: www.facebook.com/groups/lakesidebowmen



Fees:

- **First Time** – Complete probationary membership form, and pay fee. Probationary membership gives you temporary club membership and insurance cover for 3 months.
- **Second Time** – Must sign attendance record, and pay equipment hire fee if you don't have your own equipment.
- **After 3 Months** – Join club as Ordinary Full Member, and must join ABA (national association) if not already a member.

ABA Membership give you:

- Insurance Coverage,
- Rights to attend local and Interclub shoots, National Championships, Regional and World IFAA Championships,
- Receive bi-monthly "Archery Action" magazine,
- Recognised as a full voting Club Member.

Other Local Rules:

- No alcohol whilst shooting,
- Must sign in at attendance,
- Must wear enclosed shoes on the ranges,
- Don't wear full camouflage clothing,
- No broadheads to be used on the ranges.

Club Facilities:

- Good kitchen, cold drinks, tea and coffee. Good Male and Female toilets,
- Club members who are deemed "range cleared" can shoot seven days per week on the ranges,
- Clubhouse open most Sunday mornings,
- Marked 80 yard sighting in range,
- IFAA 14 target International Range,
- Assistance from club experts with setting sights, using release aids and shooting form.